

# Impact2032 Annual Data Update

This document includes the most recently available data at the time of collection in 2022 and 2023 and not necessarily data from those two years. All data is for Kennebec County unless otherwise noted.

## HEALTH



**Vision for Health:** Children and adults in Kennebec County will have opportunities to engage in healthy behaviors and leverage prevention and wellness services.

**Measurement:** Years of potential life lost before age 75 per 100,000 population.

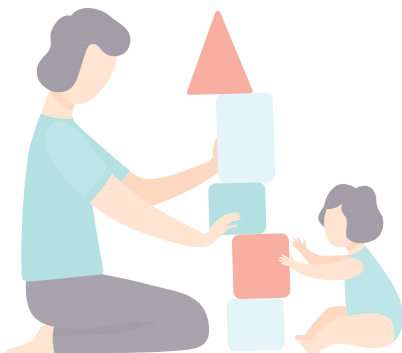
**Baseline:** 7,287.7

**Goal:** 6,900

**Desired Outcomes:** Children and adults will have...

1. Resources to participate in behaviors that promote health and wellness.
2. Access to prevention and wellness services for improved health outcomes.
3. The ability to achieve optimum health regardless of social and economic barriers.

## EDUCATION



**Vision for Education:** Children and families in Kennebec County will have access to quality early learning experiences prior to kindergarten.

**Measurement:** Percentage of 3rd graders who score at or above state expectations for reading.

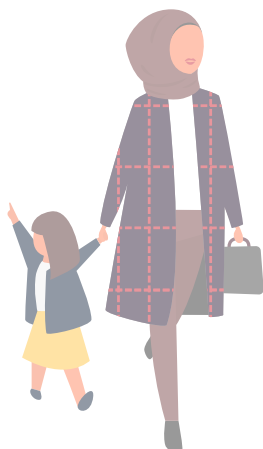
**Baseline:** 82.6%

**Goal:** 87%

**Desired Outcomes:** Children and families will have...

1. Opportunities to develop literacy and language skills to support school readiness.
2. Resources needed to promote their social and emotional development.
3. Basic health and safety needs met to be ready for learning.

## FINANCIAL STABILITY



**Vision for Financial Stability:** Adults and families in Kennebec County will have employment, income, and resources to achieve financial stability.

**Measurement:** Percentage of households paying more than 30% of household income for housing (rent or mortgage, plus utilities).

**Baseline:** 26.6%

**Goal:** 23%

**Desired Outcomes:** Adults and/or families will have...

1. A degree or credential of value to become employable.
2. The income to be financially stable.
3. The ability to afford and access services to be financially independent.

**Vision for Health:** Children and adults in Kennebec County will have opportunities to engage in healthy behaviors and leverage prevention and wellness services.

## Measurement

### 2022

### 2023

Years of potential life lost before age 75 per 100,000 population.

7287.7

7819.6

Percentage of students who eat fruits and/or vegetables five or more times a day.

Middle School  
20.6%

Middle School  
16.3%

High School  
12.4%

High School  
No new data

Percentage of students and adults who engage in recommended levels of physical activity.

Middle School  
25.9%

Middle School  
29.9%

High School  
22.6%

High School  
No new data

Adults  
51.9%

Adults  
53.0%

Percentage of students who use any tobacco (including electric vape pen).

Middle School  
5.9%

Middle School  
6.5%

High School  
30.9%

High School  
No new data

Percentage of adults who experience current symptoms of depression.

7.5%

9.7%

Number of suicide deaths per 100,000 population.

18.6

18.7

Number of overdose deaths per 100,000 population.

39.9

No New Data

\*Percentage of insured children under age 21 who received preventative dental care.

Overall  
65.2%

Overall  
54.4%

Number of cardiovascular disease deaths per 100,000 population.

212.4

218.4

Percentage of residents who are food insecure.

12.9%

10.9%

\*Percentage of people who do not have health insurance coverage.

Overall  
7.5%

Overall  
7.1%

\*See disaggregated data on next page

**Vision for Health:** Children and adults in Kennebec County will have opportunities to engage in healthy behaviors and leverage prevention and wellness services.

## Measurement

Disaggregated data: Percentage of insured children under age 21 who received preventative dental care.

Disaggregated data: Percentage of people who do not have health insurance coverage.



### 2022

### 2023

Commercial  
70.7%

Commercial  
64.5%

Medicaid  
60.5%

Medicaid  
47.3%

White  
7.3%

White  
7.2%

Black or African  
American  
12.8%

Black or African  
American  
3.7%

American Indian  
and Alaska Native  
2.1%

American Indian  
and Alaska Native  
0.0%

Asian  
19.6%

Asian  
7.8%

Native Hawaiian  
and Other Pacific  
Islander  
0.0%

Native Hawaiian  
and Other Pacific  
Islander  
0.0%

Some  
other race  
32.6%

Some  
other race  
20.3%

Two or  
more races  
10.6%

Two or  
more races  
5.0

Hispanic or Latino  
origin (of any race)  
12.3%

Hispanic or Latino  
origin (of any race)  
11.8%

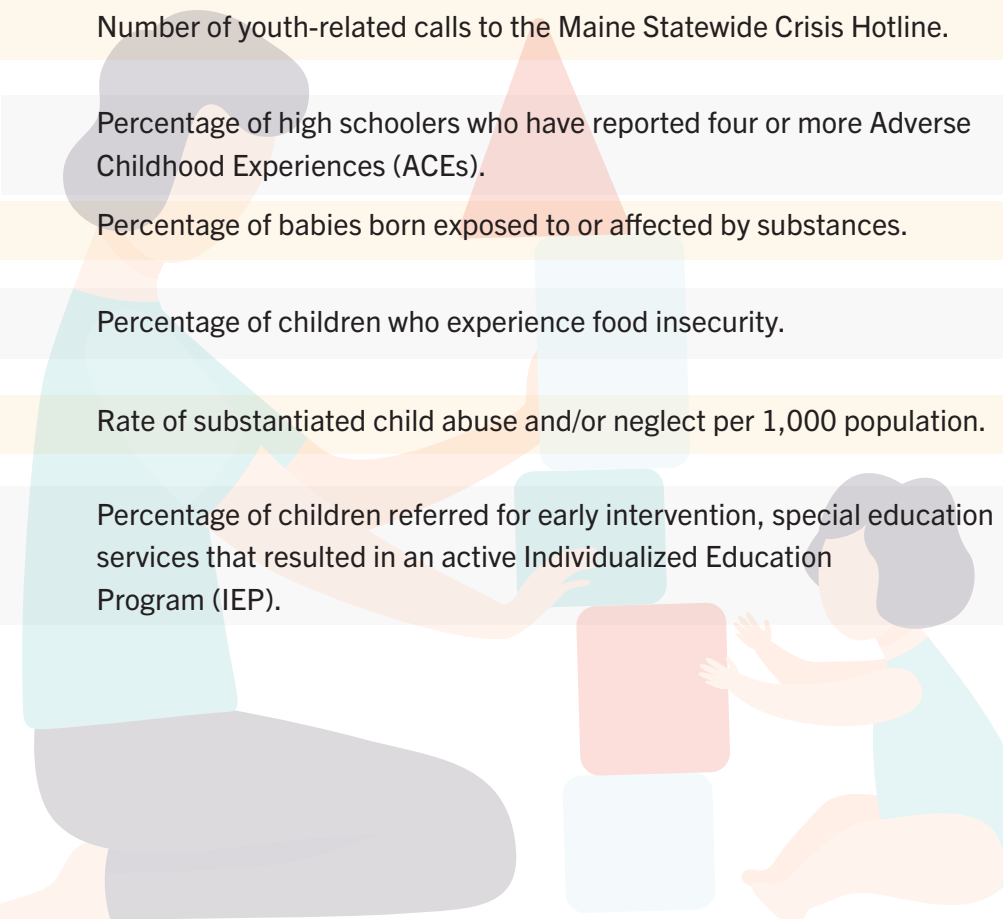
People at or  
below 200% of  
poverty  
16.5%

People at or  
below 200% of  
poverty  
11.3%

# EDUCATION

**Vision for Education:** Children and families in Kennebec County will have access to quality early learning experiences prior to kindergarten.

Measurement	2022	2023
Percentage of 3rd graders who score at or above state expectations for reading.	82.6%	81.4%
	Economically disadvantaged 75.5%	Economically disadvantaged 76.6%
	Non-economically disadvantaged 87.4%	Non-economically disadvantaged 85.0%
Percentage of four-year-old children enrolled in public prekindergarten.	48.0%	46.5%
Number of youth-related calls to the Maine Statewide Crisis Hotline.	1856.0	1772.0
Percentage of high schoolers who have reported four or more Adverse Childhood Experiences (ACEs).	22.3%	No new data
Percentage of babies born exposed to or affected by substances.	6.7%	4.5%
Percentage of children who experience food insecurity.	18.9%	15.1%
Rate of substantiated child abuse and/or neglect per 1,000 population.	26.7	21.9
Percentage of children referred for early intervention, special education services that resulted in an active Individualized Education Program (IEP).	55.0%	62.8%



# FINANCIAL STABILITY

**Vision for Financial Stability:** Adults and families in Kennebec County will have employment, income, and resources to achieve financial stability.

## Measurement

Percentage of households paying more than 30% of household income for housing (rent or mortgage, plus utilities).

2022

2023

26.6%

25.8%

Homeowners with a mortgage  
22.6%

Homeowners with a mortgage  
22.8%

Homeowners w/o a mortgage  
13.7%

Homeowners w/o a mortgage  
13.1%

Renters  
46.0%

Renters  
46.0%

High school graduation rate.

86.3

88.3

Percentage of individuals with an associate degree or higher.

40.2%

40.7%

Unemployment rate.

4.0

4.1

Percentage of households that have income below the federal poverty threshold.

See demographic breakdown on next page

See demographic breakdown on next page

Median household income.

\$55,365

\$62,118

Number of evictions.

726

727

Percentage of households that have no vehicle available.

8.1%

7.3%

Percentage of parents of children under age 6 who are in the workforce.

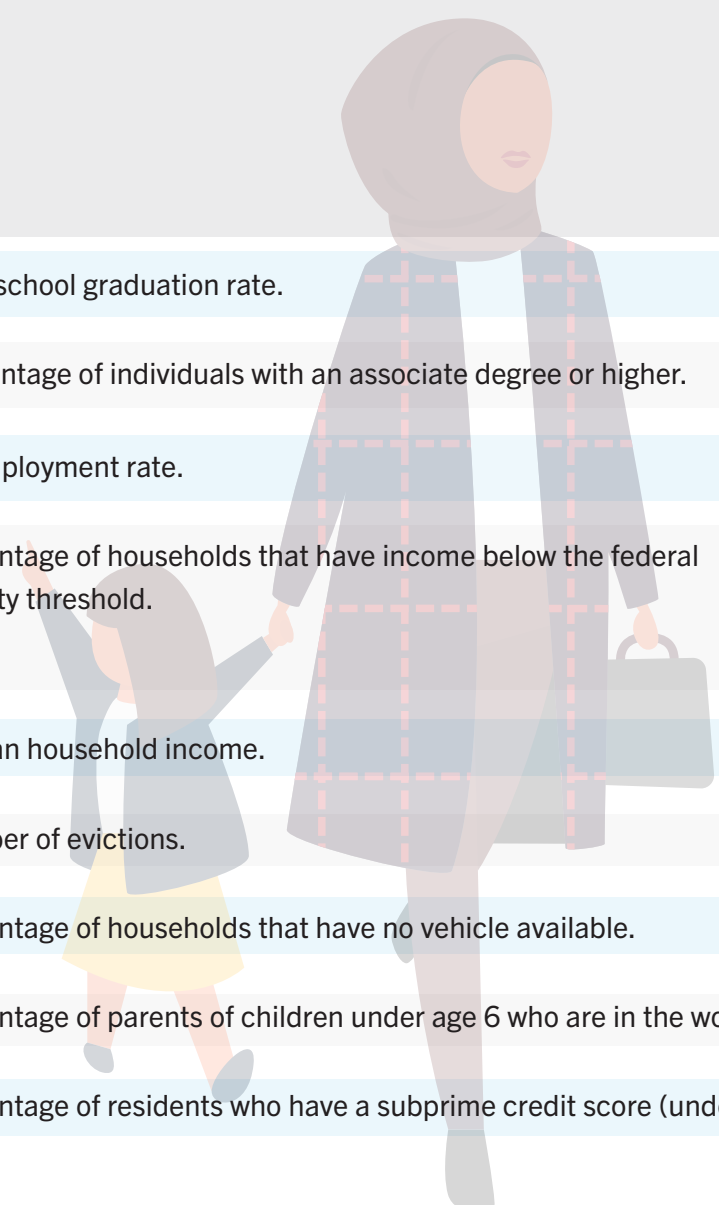
69.8%

72.9%

Percentage of residents who have a subprime credit score (under 660).

20.1%

17.9%



# FINANCIAL STABILITY

**Vision for Financial Stability:** Adults and families in Kennebec County will have employment, income, and resources to achieve financial stability.

## Measurement

\*Percentage of households that have income below the federal poverty threshold.



	2022	2023
White	12.0%	12.3%
Black or African American	28.9%	13.5%
American Indian and Alaska Native	23.2%	12.7%
Asian	16.4%	14.0%
Native Hawaiian and Other Pacific Islander	73.1%	100%
Some other race	14.6%	5.5%
Two or more races	20.7%	16.7%
Hispanic or Latino origin (of any race)	20.6%	6.1%